



Rainforest walk to Riverside Park



45 mins

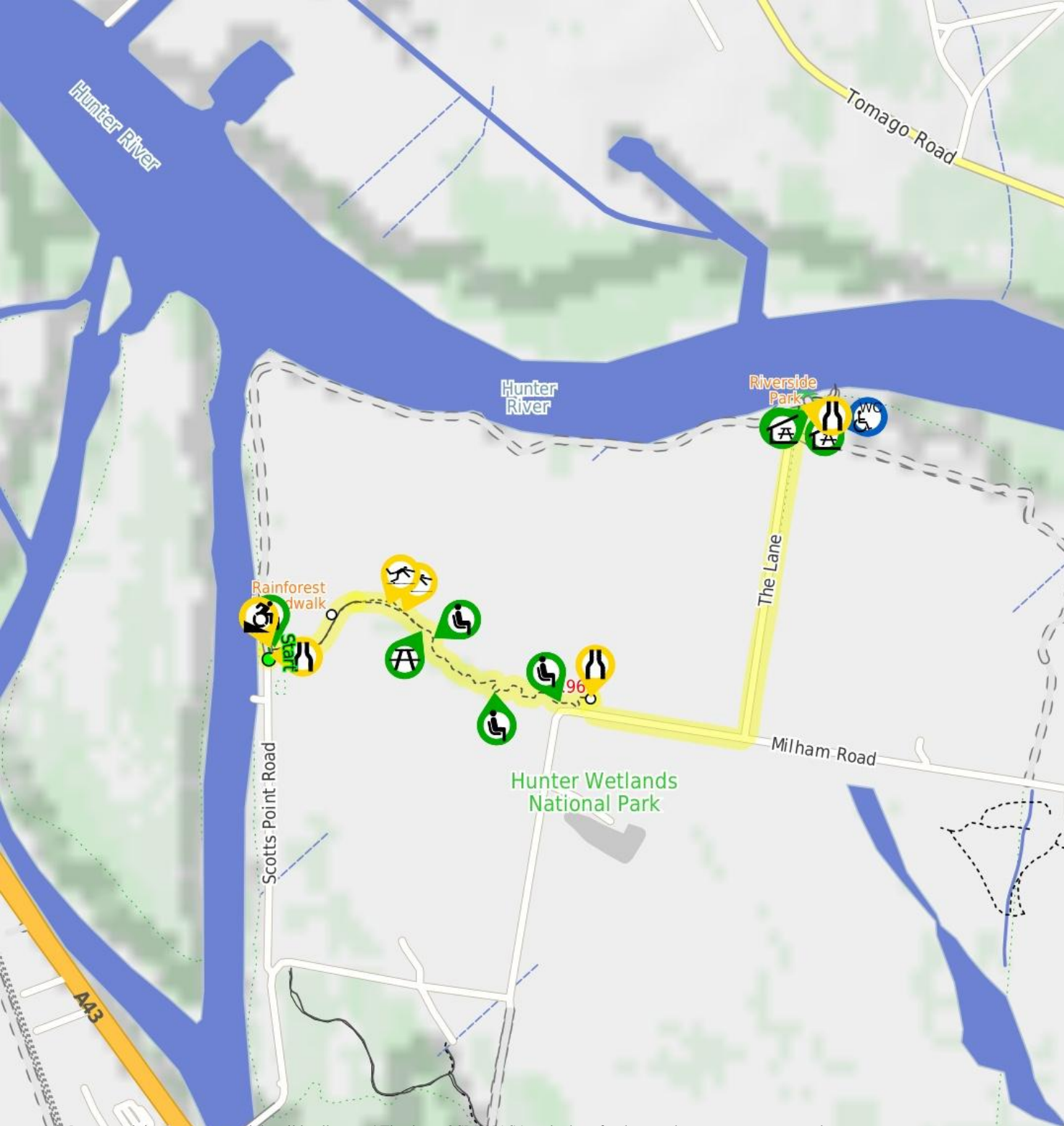
Moderate track

3

2 km One way

0m

This walk leads through the heart of Hunter Wetlands National Park allowing you to explore this area rich in history and nature. The boardwalk takes you through a wetland with great water bird viewing opportunities, the rainforest walk leads you through a diverse forest with information signs about the plants. The walk then finishes with a road walk through open areas to the well-established Riverside picnic area on the banks of the Hunter River.



1m

5m

Hunter Wetlands National Park

Are you ready to have fun?

Please ensure you and your group are well prepared and equipped for all possible hazards and delays. Check park closures, weather information and Fire Danger Rating before setting out. Optional side trips and alternate routes noted are not included in this walks overall grade, length or time estimate. Please allow extra time for resting and exploring areas of interest. The authors, staff and owners of wildwalks take care in preparing this information but will not accept responsibility for any inconvenience, loss or injury you may experience. Please take care, have fun - Happy Walking.

Getting there Traveling by car is the only practical way to get to End of Scotts Point Way (gps: -32.8388, 151.6969). Car: There is free parking available.

Traveling by car is the only practical way to get back from Riverside Park car park (gps: -32.8339, 151.709). Car: There is free parking available.

Find up to date and more information including; travel directions, weather, park closures and walker feedback at <http://wild.tl/rwtrp>

0 | End of Scotts Point Way

(30 m) From the car park at the end of Scotts Point Way Kooragang, this walk heads towards then around the metal gate between the timber bollard to walk for 15m to the 3-way intersection, marked by a large 'Welcome to Ash Island' sign .

0.03 | Int of Scotts Point and Rainforest tracks

(230 m 4 mins) Turn right: From the intersection, this walk heads directly away from the river, following 'The Silos' arrow down across the dip and along the dirt track passing 3 seats to find the fibreglass boardwalk. This walk follows the boardwalk for 200m as it winds through the wetlands giving great views and bird watching opportunities to then come to the end of the raised boardwalk and start of a dirt track.

0.26 | Rainforest boardwalk

The boardwalk leads through the beautiful Kooragang Wetlands giving great views of the water plants and birds. Specifically, this walk leads over the Water Ribbon Swale, an abandoned channel of the Hunter River. You might be lucky enough to see Chestnut Teal, Great Egret, Cattle Egret, Glossy Ibis, Australian White Ibis, Straw-necked Ibis, Common Greenshank, Sharp-tailed Sandpiper, Curlew Sandpiper, or if very lucky a Painted Snipe.

0.26 | East end of Rainforest boardwalk

(700 m 10 mins) Continue straight: From the east end of Rainforest boardwalk, this walk heads along the grass and dirt track, away from the boardwalk for 160m passing through a few potentially boggy sections to come to a picnic table by the 'Fallen Ash Grove' (on the right). This walk continues along the track for another 35m to pass a small timber seat then the track leads past a series of plant information signs for 230m to come to another small timber seat. From this seat this walk leads for another 150m through the forest

past a few more plant information signs to then cross a short fibreglass bridge. About 35m past this small bridge the track leads past another seat (on the left) then 90m later leads between the timber bollards to find the concrete 'Silos' car park beside Millams Rd, Kooragang.

0.96 | Silos car park

(1.1 km 16 mins) Turn right: From the Silos car park, this walk heads out of the car park and turns left to walk along side Millams Rd. This walk continues along the asphalt road (being careful of traffic) for 300m to head under the power lines then turn left on to the dirt road, following 'The Lane' sign. This walk then follows the dirt 'The Lane' beside the power lines for 700m to come to the asphalt Riverside Park car park at the end of the road.

2.04 | Optional sidetrip to Riverside Park int

(30 m) Continue straight: From the Riverside Park car park at the end of The Lane, Kooragang, this walk heads over the grassy and gravel area through timber bollards for less than 10m to come to an intersection just before the river, marked by a 'Riverside Park' sign. Turn right: From the intersection, this walk follows the gravel track to cross the short fibreglass bridge, keeping the river to the left. After about 10m this walk comes to a 3-way intersection with a gravel footpath, marked by an arrow post sign. At the end of this side trip, retrace your steps back to the main walk then Turn around.

2.04 | Riverside Park

Riverside Park is found near the end of 'The Lane', Kooragang within Hunter Wetlands National Park. There is the City Farm jetty on the banks of the north arm of the Hunter River. You will also find two picnic shelters, each with a water tank. There is also an accessible toilet at the back of the grassy area. There are a few walks that leave from the area and it is also a popular fishing and bird watching area.





This page is designed to give you a sense of the facilities that help improve access for people with disabilities or mobility restrictions. See tracknotes and map for navigation, point of interest and other information. See the Accessibility Details page for specific information about each facility.

Parking: There are 0 designated accessible parking areas on this walk.

Toilets: There are 0 toilets on this walk.

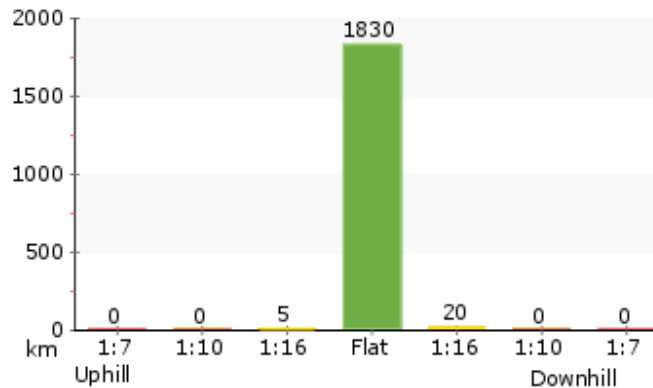
Seats: There are 5 seats on this walk. They are on average 220m apart, with a maximum gap of 380m.

Surface

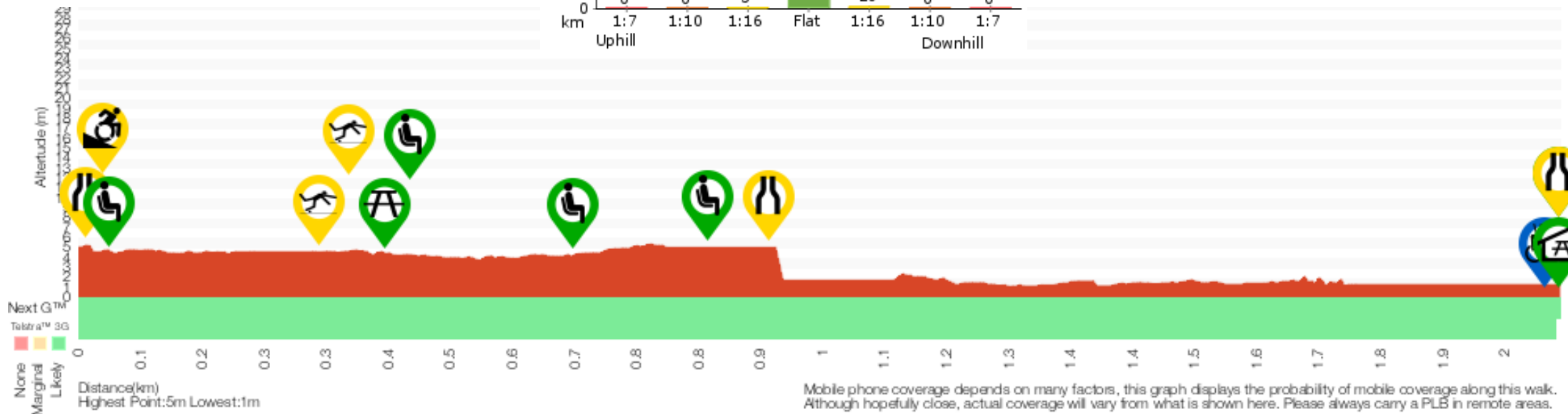
The first 250m of this walk is on hard dirt or boardwalk paths. The following 700m follows a grassy and dirt track that becomes boggy after rain or very high tides, potentially requiring an all-terrain wheelchair or assistance. The last section follows a hardened road.

Steepness

This walk is mostly flat less than 1:12 step. This graph shows how steep the track is.



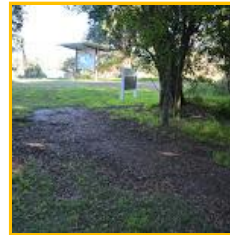
3 Grade 3/6 Moderate track	
Length	2 km One way
Time	45 mins
Quality of track	Formed track, with some branches and other obstacles (3/6)
Signs	Clearly signposted (1/6)
Experience Required	No experience required (1/6)
Weather	Storms may impact on navigation and safety (3/6)
Infrastructure	Limited facilities, not all cliffs are fenced (3/6)



Mobile phone coverage depends on many factors, this graph displays the probability of mobile coverage along this walk. Although hopefully close, actual coverage will vary from what is shown here. Please always carry a PLB in remote areas.



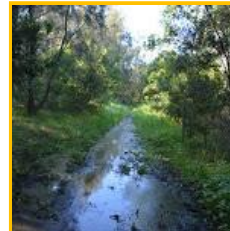
1 Pinch Point (10m)
A 1.5m gap beside a normally locked (1m high) gate.



2 Wheelchair Steep (30m)
There is a 4m long moderately steep section across the dirt/grass between the trail and the boardwalk.



3 Seat (40m)
Three timber bench seat, 55cm high, 19cm deep and 1.9m wide with no arm or backrest.



4 Trip Hazard (330m)
A 25m long boggy section of track. The track floods after heavy rain or very high tides.



5 Trip Hazard (370m)
A 10m long boggy section of narrow track. The track floods after heavy rain or very high tides.



6 Picnic Table (420m)
A timber slat picnic table and bench seat. The table is 86cm high, 70cm deep and 1.8m wide. The seats are 47cm high, 22cm deep and 1.8m wide (no backrest). With plenty of shade from a tree, on a concrete slab about 4m from track.



7 Seat (460m)
A timber bench seat, 60cm high, 20cm deep and 1.5m wide with no arm or backrest.



8 Seat (680m)
A timber bench seat, 49cm high, 22cm deep and 1.5m wide with no arm or backrest.



9 Seat (860m)
A timber bench seat, 50cm high, 19cm deep and 1.9m wide with no arm or backrest.



10 Pinch Point (950m)
Timber bollard pinchpoints around edge of carpark. The gap between the bollard are 1.4m, they are 94cm high.



11 Toilet Accessible (2010m)
Shared male/female accessible toilet. Entrance is 85cm wide, no hand basin, toilet seat 47cm high with a 87cm high handrail, in a 3x2m room.



12 Picnic Shelter (2030m)
A timber slat picnic table and bench seat under roof. The table is 79cm high, 73cm deep and 2.1m wide. The seats are 46cm high, 44cm deep and 2.1m wide (no backrest). The table is on a (6x6m) concrete slab.



13 Picnic Shelter (2030m)
A timber slat picnic table and bench seat under roof. The table is 79cm high, 92cm deep and 2.1m wide. The seats are 46cm high, 28cm deep and 2.1m wide (no backrest). The table is on a (6x6m) concrete slab. There is a second similar table opposite not in a shelter.



14 Potable Water (2030m)
Water tank beside picnic shelter. Treat water before use. Tap 60cm high on concrete slab.



15 Potable Water (2030m)

Water tank beside picnic shelter. Treat water before use. Tap 60cm high on concrete slab.



16 Pinch Point (2030m)

Plastic bollard pinch points around the edge of the carpark. The largest gap between the bollard is 1.3m, 90cm high.